

ABEVA BRIEF

Published for Arizona Biltmore Residents Only

Vol. XXV, No. 10 • October 2021

ABEVA Mission Statement

ABEVA pledges aggressive leadership to nourish and enhance our Biltmore Lifestyle by preserving and protecting the ambience and environment, and by maintaining standards which benefit all members of ABEVA.

ABEVA is not affiliated with Biltmore Lifestyles magazine and does not necessarily endorse or recommend any of its content or advertisers.

FROM THE ABEVA OFFICE Annual Assessments

ABEVA Annual Assessments Are \$325 This Year

The Annual Assessment Statements were mailed out the last week of September and are due November 1st, 2021.

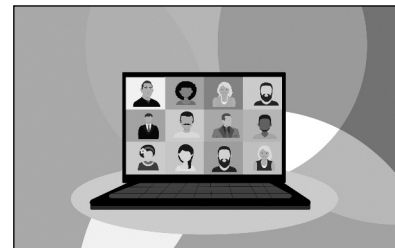
PAYMENT METHODS FOR YOUR ABEVA DUES ARE:

- **Mail-in Payment:** The statements that were sent out have a perforated tear-off portion that is to be returned with your check for \$325. Please continue to make checks payable to ABEVA. Please put your ABEVA account number in the memo portion of your check to help ensure that your payment is applied to your account. **Send Payments to: P.O. Box 67848, Phoenix, AZ 85082.**
- **Automatic Payment Through Your Bank:** Please contact your bank on how to arrange for payment/transfer. Remember, it is important to provide your name, your ABEVA account number, and ABEVA as the Payee. Please make sure to update the payment amount to \$325.
- **Pay by Credit card or E-Check:** Instructions for paying online by card or check can be found at www.abeva.com. Please note a convenience fee is applied when using this payment method. Payments may take 5-7 business days to process.

Please note that debit or credit card payments cannot be accepted over the phone at the ABEVA Office.

ABEVA Account Number: Please refer to your statement for your account number.

If you have any questions regarding payment options, account history or concerns, please contact the ABEVA office at 602-955-1003. ❖



October ABEVA Board Meeting

The next ABEVA Board of Directors Meeting is October 18th, 2021 at 5:30 p.m. The meeting will be held at the ABEVA office and online via Zoom. If you wish to join the meeting, please check the ABEVA website at www.abeva.com for the login link to join the meeting. Please be sure the Zoom app has already been downloaded before trying to join via the meeting link. ❖

Board Meeting Updates

The full minutes of the Board Meetings are posted on the ABEVA website at www.ABEVA.com after they are approved, usually the following month. The *ABEVA Brief* will highlight the main items addressed at the board meeting and the happenings around the community. ❖





SECURITY

Historically, our area has experienced cat burglaries. These nighttime or early morning burglaries occur while residents are usually home sleeping. Most often, the burglar accesses the home through an unlocked door or open window. Please ensure your homes are secure and alarms are set while you are home or away, and especially while you are sleeping. Report all suspicious people, vehicles, or activities to Crime Stop at (602) 262-6151 or call 911 if it is an emergency. Also, please make sure to let the ABEVA patrol knows about any reported incidents.

Let's work together to make the Biltmore a safer place. ❖

Monthly ABEVA Patrol Report for August 2021

Name of Incident	Total Incidents
ABANDONED VEHICLE	4
ALARM	6
DAMAGE TO PROPERTY	2
DOOR NOT SECURE	2
GARAGE DOOR OPEN	41
GATE	9
JUNK, LITTER AND DEBRIS	3
LANDSCAPING	35
LIGHTS OUT	10
LOST & FOUND	1
LOUD NOISE	3
MOVING VIOLATION	1
OTHER	9
PACKAGE FOUND	2
PARKING VIOLATION	118
POLICE - FIRE - EMS ON SITE	2
POLICE ON SITE	3
SOLICITATION	3
SUSPICIOUS PERSON	2
SUSPICIOUS VEHICLE	3
TRESPASSING	6
WATER	6
WILDLIFE	1
TOTAL REPORTS:	272

Fall Overseeding in the Biltmore

The Biltmore communities are currently in the process of fall overseeding. If you would like to overseed your lawn, the optimum time to overseed in Arizona is during the first two weeks of October, or when the evening temperatures stay below 65 degrees.

Steps To Overseed Your Lawn

Step 1—Scalping

To ensure a good overseed for the winter, you need to eliminate the competition of your summer lawn and reduce the thatch that has accumulated over the summer.

Step 2—Seeding

The better quality your grass seed, the better quality your lawn will be. Depending on how lush you prefer your lawn and the typical grass height you are planning, the amount of seed that you will need varies:

- Home Lawns (1"-2") - 12 pounds per 1,000 square feet
- Home Lawns (1/2"-1") - 15 pounds per 1,000 square feet

Step 3—Fertilize

Be sure to fertilize with a starter fertilizer before turning on your water.

Step 4—Mulch

This step is optional, but can be critical if you (1) do not have a good irrigation system, (2) do not have a timer that can water 4-5 times per day, or (3) the temperatures have cooled too quickly.

Step 5—Water

Water is critical! You want to maintain a moist seedbed for a period of seven to ten days to allow the seed to germinate. You will want to water 4 to 5 times per day for very short cycles that leave no puddles and no dry spots.

Step 6—Mowing

The first mowing should occur at the 10th to 14th day after germination. Once your ryegrass is established, you can follow normal upkeep measures outlined in our maintenance section.

Step 7—Turf Nutrition

Your winter lawn will require feeding, just like your summer lawn. Feed your ryegrass monthly with an analysis such as 21-7-14 or 22-3-9. ❖

SPECIAL OFFERS AND EVENTS

Embassy Suites ~ Special Rate

2630 East Camelback Road, Phoenix, AZ 85016

For your out-of-town guests or just for a staycation, there will be a 15% discount off the Best Available Rate for ABEVA members. For reservations, please call 602-955-3992, or you may make your reservations on the website at www.phoenixbiltmore.embassysuites.com and under corporate code use ID 2759628. ❖

Wrigley Mansion News

Wine Dinners Are In Full Swing!

Whether you're brand new to wine or a passionate connoisseur, The Wrigley Mansion Wine Dinners are a great way to spend an evening sampling and learning more about wine. The October dinners are as follows:

October 13th – Spire Collection

Spirecollection.com

October 27th – Plumpjack/Cade/Odette/Adaptation

Plumpjackwinery.com

For information, or to reserve your spot for these exclusive wine dinners, visit www.wrigleymansion.com/wine-program.

The historic Wrigley Mansion is a private premier fine dining and special event venue which includes Geordie's Restaurant and Lounge, Jamie's Wine Bar, Christopher's at Wrigley Mansion, and historic tours. Membership is required, starting at \$20/year. Visit Wrigleymansion.com for information on events and happenings each month. ❖





Biltmore Area Partnership Luncheon

The next Biltmore Area Partnership Luncheon will be held on October 26th at 11:30 a.m. The speaker will be Jeff Moloznik, Senior Vice President of Red Development Company. Red Development is redeveloping the northwest corner of 44th Street and Camelback Road called The Grove. The luncheon will be held at the AC Hotel Biltmore located at 2811 East Camelback Road.

The cost is \$35 for members and \$40 for nonmembers. BAP is now able to accept credit cards. Reservations and checks should be sent to Biltmore Area Partnership, 3104 East Camelback Road, #174, Phoenix, AZ 85016.

For further information about membership and luncheons, please contact Ed Rossi, Executive Director at azbapphx@aol.com or call (480) 368-0974. ❖

Arizona Biltmore Golf Club News

We hope to see you at the Arizona Biltmore Golf Club and The Adobe Restaurant this month. Here are just a few of the things happening at the Club.

Golf Course Overseeding Dates: The Adobe Course will be closed for overseeding October 4th through the 24th. The Adobe will reopen on October 25th and will be cart path only for one week after reopening. The Links Course will be closed for overseeding October 25th through November 14th. The Links Course will reopen on November 15th and will also be cart path only for one week after reopening. For those not familiar with overseeding, it is the annual planting of winter ryegrass.

Are You A Rewards Member? Did you know Biltmore Rewards Members automatically save on greens fees just for signing up? Its free and easy to become a Rewards Member – either download the Arizona Biltmore Golf Club App and sign-up there or sign-up in the golf shop. Rewards Members earn points for playing and purchases towards free golf!

Book Your Holiday Party: It's October, so time is ticking to schedule your holiday party. Make the entire Adobe patio yours for a work or family holiday party for 50 guests or under. Call or email Matt Vega for details at 602-468-9160 or mvega@jdmgolf.com.

Adobe Happy Hour: Enjoy Happy Hour drink specials at The Adobe Restaurant. Specials from 3:00 p.m. until close (6:00 p.m.). Draft specials include \$4 Barn Brew, \$4 Bud Light, \$4 Domestic Cans, and \$5 Seasonal Craft Selection; Wine Specials include \$5 House White/Red and Bubbles; and all Craft Cocktails are \$8.

Everyday Specials at The Arizona Biltmore Golf Club: The Arizona Biltmore Golf Club offers great ways to play and save:

🏏 **Sunday Family Day:** Kids under 17 play free with a paying adult after 1:00 p.m. (1 child per adult 21yr or older).

🏏 **Lunch Break Special:** Enjoy a hot dog, a drink, and a bucket of practice balls for just \$15.

Frontline & Public Service Rate: As a small token of our appreciation for all they do for the community and country, all frontline workers and first responders (doctors, nurses, police, fire, emergency services and military) will receive \$5 off of their round. Bring up to three friends with you at the same rate and enjoy the great conditions. (Must have valid I.D., good for all current and retired personnel).

For more information, to book a golf tee time, corporate lunch or private function, visit www.azbiltmoregc.com or www.theadoberestaurant.com. ❖



ABEVA Board of Directors

Steve Helm, President
Will Hawking, Vice President
Mark Monserez, Secretary
Judith Shafkind, Treasurer
Wes Balmer, Director
Garnet Harding, Director
John Lynch, Director
Bill McKay, Director
Keith Mishkin, Director

ABEVA Office Information

2525 East Arizona Biltmore Circle, Building D, Ste. 145
Phoenix, Arizona 85016
Hours Mon.-Fri. 8:30 am-5 pm
602-955-1003 phone
602-955-1144 fax
Carol Jones
Executive Director
cjones@abeva.com

Roving Patrol: 602-369-4776
Police Dept. Non-Emergency:
602-262-6151

Website Information

Please visit the website at www.abeva.com. There is a link to pay your annual assessment. You can download many ABEVA documents; CC&Rs, Parking Permission, Architectural Request Form, and more. You may also read board minutes and the *ABEVA Brief* online. ❖

Handy Contacts

City of Phoenix Back-Washing
602.256.3190
Dead Animal Pick-up
602.262.6791
Dog Catcher
602.506.7387
Snake Control
480.894.1625
Fish & Game
602.942.3000
SRP Outages
602.236.8811
Water Department
602.262.6251
Water Department (after hours)
602.261.8000



SUB-ASSOCIATION MANAGEMENT COMPANIES ~ 10/1/2021

Name	Management Company	Phone
Courts I	Choice Community	602-843-1333
Courts II/Vistas	AZ Community Management	480-355-1190
Villas II	Choice Community	602-843-1333
Gates	Associated Property Management	480-941-1077
Greens 3-6	PMP Management	480-591-9380
Shores	Integrity First Management	623-748-7595
Square	Choice Community	602-843-1333
Terrace	Ogden & Co.	480-396-4567
Cloisters	AAM, LLC	602-957-9191
Colony B/CB Greens	Vision Community Management	480-759-4945
Colony B IV/Villas I	Ogden & Co.	480-396-4567
Del Prado Apts.	Hillsboro Management	602-957-3400
Heights	Jsquard Property Management	623-251-5260
Meridian Condos	Sentry Management	480-345-0046
Taliverde	Ancor Property Professionals, Inc.	480-948-5860
Village on the Lakes	Trestle Management Group	480-422-0888
2 Biltmore	Brown Community Management	480-539-1396
Fairway Lodge	AAM, LLC	602-957-9191



ABEVA MEMBER DISCOUNTS FOR OCTOBER 2021

The following businesses and ABEVA partners have graciously offered to provide discounts to ABEVA MEMBERS ONLY. THERE IS NO ABEVA-ISSUED CARD. TO SHOW YOU ARE A MEMBER OF ABEVA, BRING THIS SECTION OF *THE BRIEF* WITH YOU. Please call first to verify that they are open.

Restaurants

- Wrigley Mansion - 20% off brunch. For your reservation, call 602-955-4079.

Partners & Businesses

- Foothills Pet Resort - 3165 E. Lincoln Drive. 10% off boarding, daycare, and grooming services. Call 602-956-2302 or visit www.foothillspetresort.com.
- State of the Art Designers in Hair 2398 E. Camelback Rd. 50% off all hair services with stylist Jill Moore. Call 602-435-8488.
- UPS Store 3219 E. Camelback Road (next to Tomaso's) 10% off 602-952-8830.
- Groom Room Barbershop at Biltmore Fashion Park. Receive \$5 off. Call 602-252-2552.



- Get Your Move On, Delicate Moving & Storage - \$100 off for your next move. Call 480-695-6621.



- RunBuddy Mobile - Mobile Dog Gym. Call 480-433-8835 or visit runbuddymobile.com. \$30 per dog on first visit.



- Uptown Hound - Dog Groomer and Stylist. 4723 N. Central Avenue. 602-266-DOGS. 10% off first time services.



- Pet Market - 4719 N. 20th St. #A30. Mention you are an ABEVA member to receive 10% off your entire purchase. To redeem use code item#:500170. 602-954-4000 or visit www.choicetpetmarket.com.

